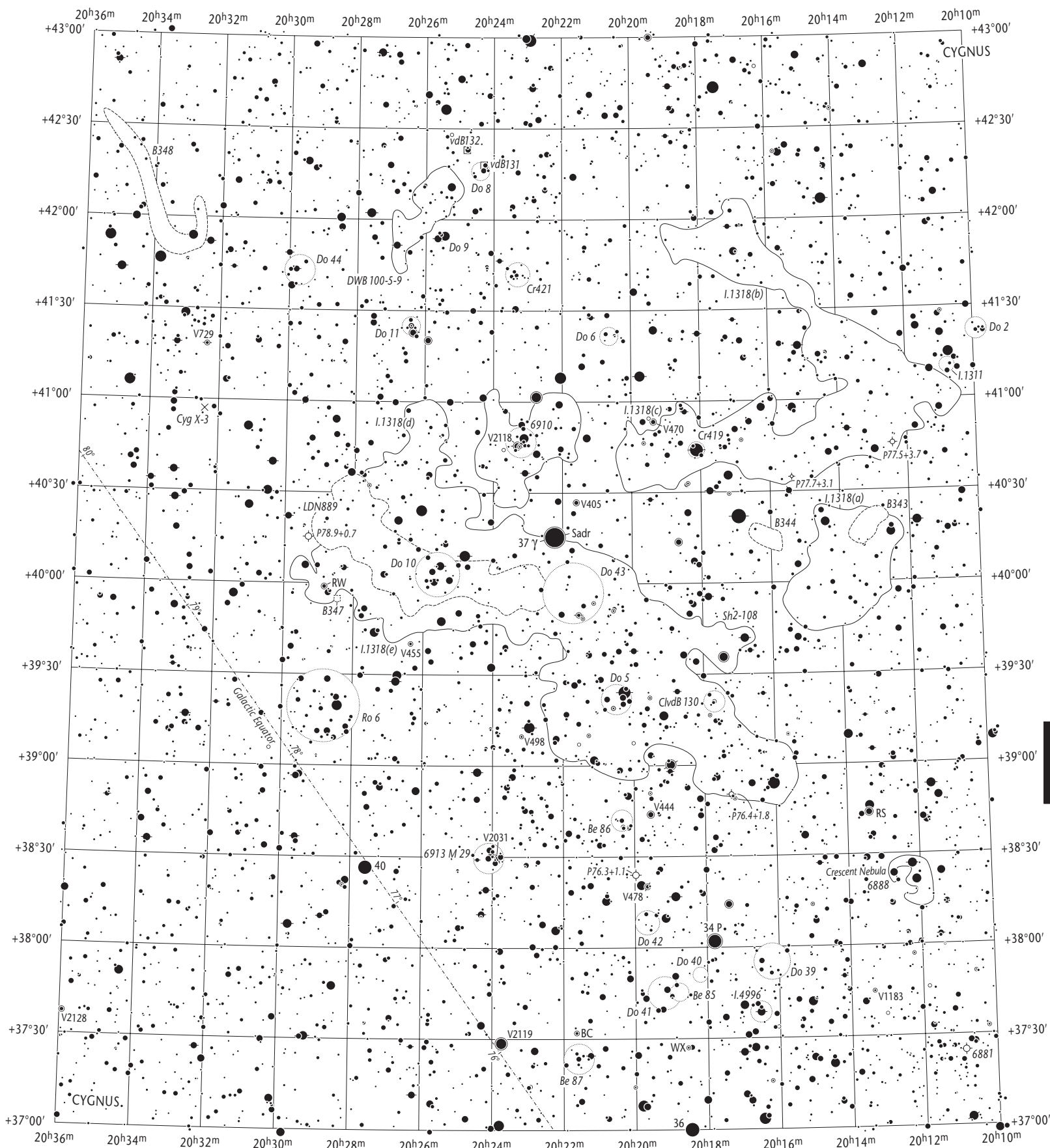


Gamma Cygni Region (Charts 32 / 48) – A2



<p>Stellar Magnitudes (V)</p> <p>2.0 and brighter 2.5 3.0 3.5 4.0 4.5 5.0 5.5 6.0 6.5 7.0 7.5 8.0 8.5 9.0 9.5 10.0 10.5 11.0 11.5 fainter</p>										<p>Open Star Clusters & Asterisms</p>		<p>Galaxies</p> <p>> 2.5' to scale 2.5'-1' 1'-0.5' < 0.5' major axis</p>		<p>Planetary Nebulae</p> <p>> 60" 30"-10" 10"-5" 60"-30" < 5"</p>		<p>CYG</p>
<p>Globular Star Clusters</p>										<p>Bright & Dark Nebulae</p> <p>Objects are plotted to scale if larger than 2.5'</p>		<p>Objects are plotted to scale if larger than 2.5'</p>				

Copyright © 1987-2001 Willmann-Bell, Inc.

Wil Tirion / Barry Rappaport / Will Remakus